



Bromic Heating  
The Complete Solution

## Information Pack

---



SMART-HEATING

**BROMIC**HEATING.COM

A member of the Bromic Group

### CONTENTS

|  |    |
|--|----|
| <b>Platinum Smart-Heat™ Gas</b>                                | 3  |
| Specifications   | 4  |
| Dimensions   | 4  |
| Recommended Installation Clearances                            | 4  |
| Recommended Mounting Distance & Heating Area                   | 4  |
| <b>Tungsten Smart-Heat™ Gas</b>                                | 5  |
| Specifications   | 6  |
| Dimensions   | 6  |
| Recommended Installation Clearances                            | 6  |
| Recommended Mounting Distance & Heating Area                   | 6  |
| <b>Smart-Heat Gas Accessories</b>                              | 7  |
| Ceiling Pole   | 7  |
| Ceiling Pole Paddle Dimensions                                 | 7  |
| Installation Of Ceiling Mount Pole                             | 7  |
| Dual Layer Heat Deflector                                      | 7  |
| <b>Complimentary Design Service Pre Installation Checklist</b> | 8  |
| <b>Platinum Smart-Heat™ Electric</b>                           | 9  |
| Specifications   | 10 |
| Dimensions   | 10 |
| Recommended Installation Clearances                            | 10 |
| Mounting Options   | 10 |
| <b>Tungsten Smart-Heat™ Electric</b>                           | 11 |
| Specifications   | 12 |
| Dimensions   | 12 |
| Recommended Installation Clearances                            | 12 |
| <b>Tungsten Smart-Heat™ Portable</b>                           | 13 |
| Specifications   | 14 |
| Dimensions   | 14 |
| Recommended Mounting Distance & Heating Area                   | 14 |
| <b>Maintenance and Care</b>                                    | 15 |

### PRODUCT FEATURE KEY



**Even heat distribution**  
Heat from the burners is transmitted through a translucent ceramic medium which allows a more effective dispersion of heat.



**Wind Resistant**  
Effective heat guaranteed in windy conditions. (Wind resistance varies between models).



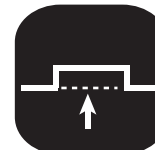
**Surface does not glow**  
Non-glowing heat to blend easily into any environment.



**Smart Control System**  
Simultaneously & instantly switch on heaters from a remote-located switch.



**Symmetrical & Balanced Design**  
Stylish and aesthetically pleasing design.



**Recess option**  
Allows seamless integration into the heating area.



**Rotational Mounting Bracket**  
Heaters come standard with an easy-pivot arm which allows adjustment of heat direction. This provides greater versatility and heat coverage.



**Water / Splash Resistant**  
The heater can sustain splashes of water from all angles and remain on.

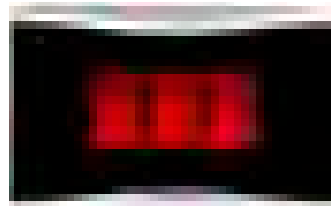
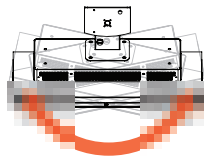
# PLATINUM SMART-HEAT™ GAS

## Top quality performance and the looks to match

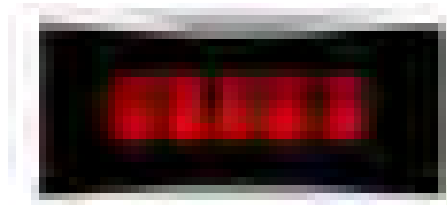
Brushed stainless steel and a ceramic medium make Platinum Smart-Heat™ Gas suitable for all outdoor environments.

Tinted ceramic fascia provides a soft glow, enhancing the overall experience and ensuring even heat distribution.

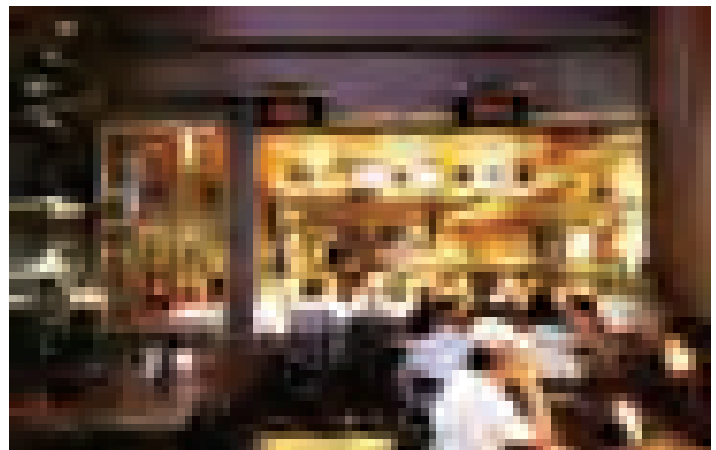
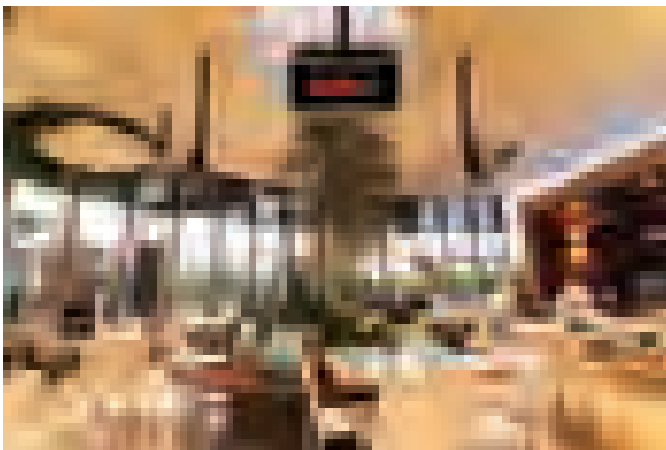
Directional ceiling or wall mounting provides greater positioning versatility and heat coverage.



**Platinum Smart-Heat™ Gas**  
300 Series  
LPG (Propane)/ Natural Gas



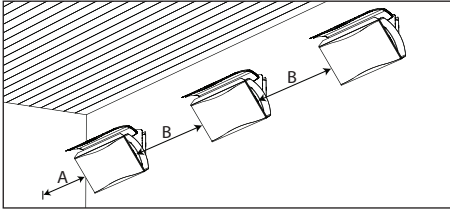
**Platinum Smart-Heat™ Gas**  
500 Series  
LPG (Propane)/ Natural Gas



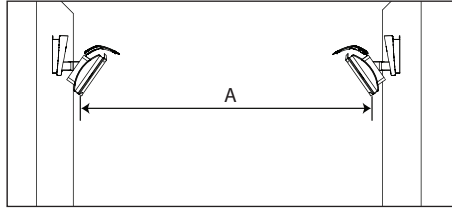
### FEATURES

- Full Stainless Steel Construction
- Higher levels of wind resistance. Platinum units are wind resistant to 18km/h (11pmh).
- Electronic ignition. Can be wired into C-Bus and smart system controls
- Automatic Re-Ignition - In the instance of the unit blowing out, it will attempt to re-ignite.
- Use of a ceramic medium creates the most even levels of heat dispersion.
- Can be run on LPG or Natural Gas
- Available in two sizes a 300 Series (25Mj/ 23,600BTU) and a 500 Series (42Mj/39,800BTU)
- Can be wall mounted or ceiling mounted
- Easy Pivot Arm bracket allows for direction of heat to be adjusted providing greater versatility and heat coverage

## RECOMMENDED MOUNTING DISTANCE\*

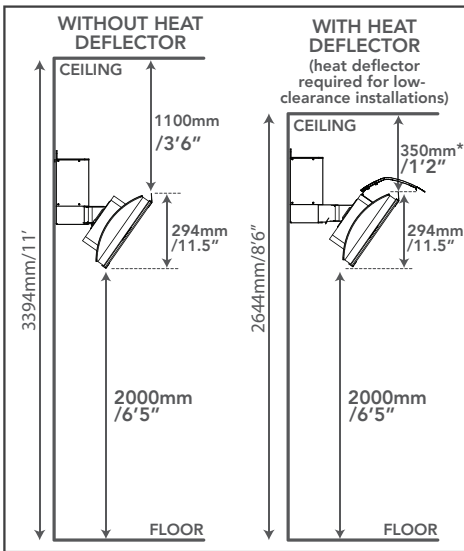


| Model | A           | B                           |
|-------|-------------|-----------------------------|
| 300   | 1100mm/3'7" | 2500 - 3500mm/ 8'2" - 11'5" |
| 500   | 1100mm/3'7" | 2500 - 3500mm/ 8'2" - 11'5" |

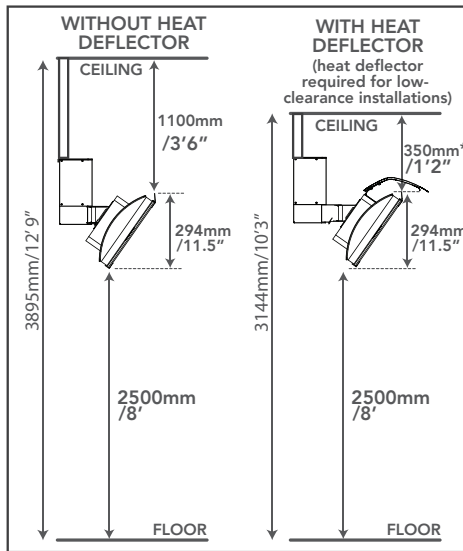


| Model | A                            |
|-------|------------------------------|
| 300   | 6000 - 7000mm/ 19'8" - 23'   |
| 500   | 8000 - 9000mm/ 26'3" - 29'6" |

## MINIMUM INSTALLATION CLEARANCES WALL MOUNTING



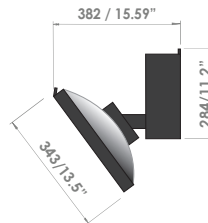
## MINIMUM INSTALLATION CLEARANCES CEILING MOUNTING



300



500



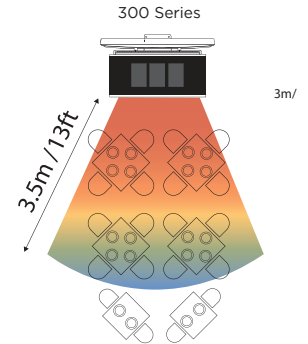
500 Series

## SPECIFICATIONS

|   | 300 Series  | 500 Series  |
|---|---|---|
| Ceiling Poles                                       | Five length options for different ceiling heights - 3.2m (10.5'), 3.4m (11.2'), 3.6m (11.8'), 3.8m (12.5') and 4m (13') - unit must be mounted 2.5m (8') off the ground (contact Bromic Heating for more information) |   |
| Heat Output (on Propane LPG and NG)                 | 25MJ / 23,600BTU/6.9kW  | 42MJ / 39,800BTU/6.9kW  |
| Approximate area heated (m <sup>2</sup> )           | 12m <sup>2</sup> /130ft <sup>2</sup>  | 20m <sup>2</sup> /200ft <sup>2</sup>                            |
| Gas connection                                      | 3/8" M SAE / 1/2" NPT Female  | 3/8" M SAE / 1/2" NPT Female                                    |
| Electrical connection                               | 240 Volt, 3-pin insulated plug / 110 Volt, 3-pin insulated plug   | 240 Volt, 3-pin insulated plug / 110 Volt, 3-pin insulated plug |
| Dimension (WxDxHmm)                                 | 560 x 382 x 428mm / 22.05" x 15.59" x 14.85"  | 756 x 382 x 428mm / 29.76" x 15.59" x 14.85"                    |
| Min. distance to combustible materials <sup>2</sup> | Side: 1100mm / 3.6'   |   |
| (without heat deflector) <sup>2</sup>               | Above (to ceiling): 1100mm / 3.6'   |   |
| (with heat deflector) <sup>2</sup>                  | Above (to ceiling): 350mm / 1'2"  |   |
| Mounting height requirement to ground <sup>3</sup>  | Wall Mount: 2000mm, Ceiling Pole Mount: 2500mm  |   |
| Weight (kg)   | 12.5kg/33lb   | 16.5kg/40lb   |

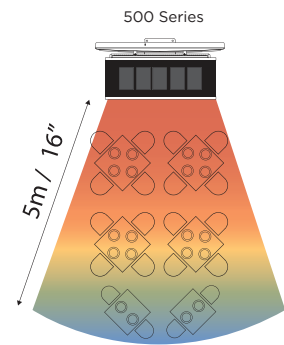
<sup>1</sup>Must only be installed by a licensed technician. Must complete "Pre-Installation Checklist" before installing. <sup>2</sup>The temperature will not exceed 65°C above the ambient temperature at specified distances. Please consult material manufacturer for temperature ratings and suitability. Bromic Heating takes no responsibility for material compliance. <sup>3</sup>Installation must be performed in accordance with AS5601 installation code (or relevant standard) and must comply with any additional jurisdictional requirements. Bromic takes no responsibility for incorrect or non-compliant installations.

## HEATING AREAS



3.5m / 11'5"

Heats approx. 12m<sup>2</sup> / 130ft<sup>2</sup>  
25MJ / 23,600 BTU heating power



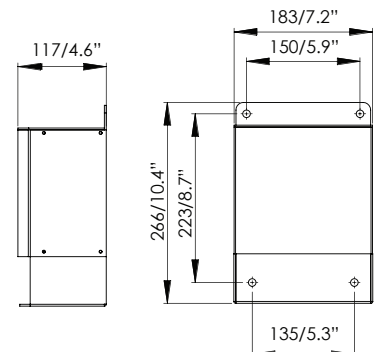
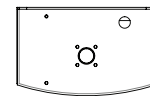
4m / 13"

Heats approx. 20m<sup>2</sup> / 200ft<sup>2</sup>  
42MJ / 39,800 BTU heating power

\*Heat area dependent on ambient temperature and wind.

Optimum conditions experienced at approx 15.5°C / 60°F & low wind

## WALL BRACKET DIMENSIONS



\*See Page 7 For Accessories



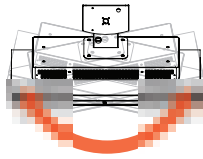
# TUNGSTEN SMART-HEAT™ GAS

A designed, cost-conscious product blending aesthetics and function

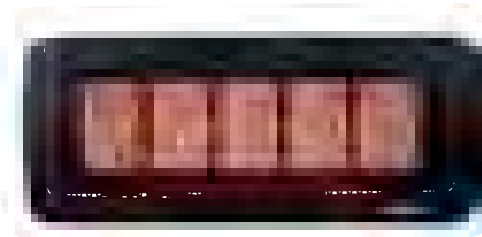
A designed, cost-conscious product range that does not sacrifice aesthetics for function.

The patented direct ignition system, never before seen on an outdoor gas radiant heater, ensures a reliable start and effective operation.

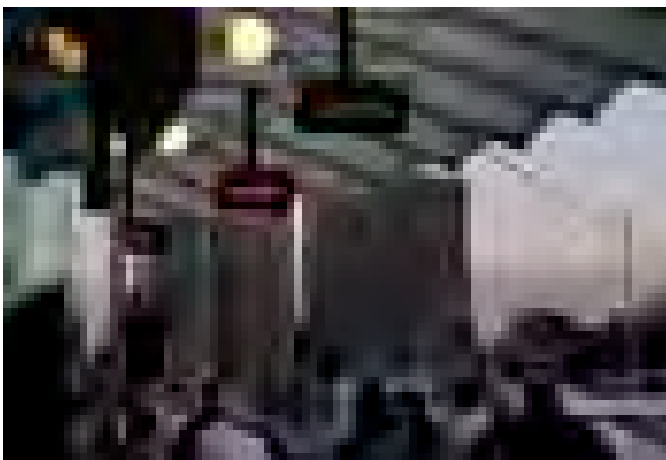
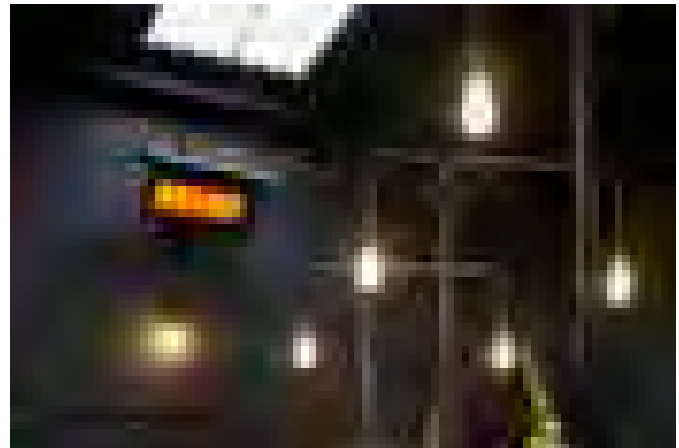
To ensure safe usage the Tungsten Smart-Heat™ is fitted with a "Flame Failure Safety Shut Off Control" turning off the unit instantaneously.



**Tungsten Smart-Heat™ Gas**  
300 Series  
LPG (Propane)/ Natural Gas



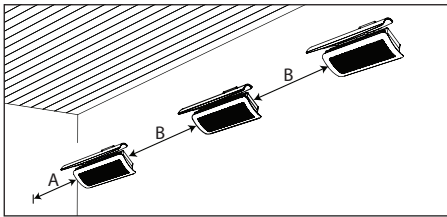
**Tungsten Smart-Heat™ Gas**  
500 Series  
LPG (Propane)/ Natural Gas



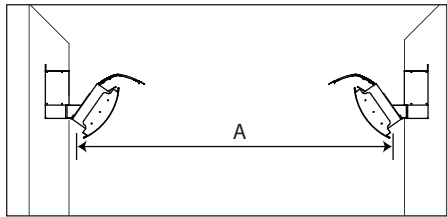
## FEATURES

- Full Stainless Steel Construction
- Tungsten units are wind resistant up to 12km/h(8mph).
- Electronic ignition. Can be wired into C-Bus and smart system controls
- Automatic Re-Ignition - In the instance of the unit blowing out, it will attempt to re-ignite.
- Can be run on LPG or Natural Gas
- Available in two sizes a 300 Series (25Mj/ 23,600BTU) and a 500 Series (42Mj/39,800BTU)
- Can be wall mounted or ceiling mounted
- Easy Pivot Arm bracket allows for direction of heat to be adjusted providing greater versatility and heat coverage with 25° rotation to each side.

## RECOMMENDED MOUNTING DISTANCE\*



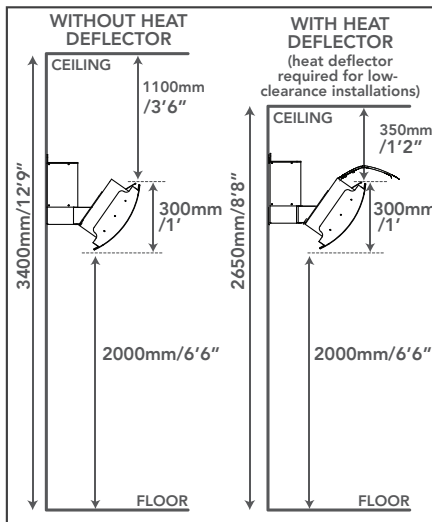
| Model | A           | B                           |
|-------|-------------|-----------------------------|
| 300   | 1100mm/3'7" | 2500 - 3500mm/ 8'2" - 11'5" |
| 500   | 1100mm/3'7" | 2500 - 3500mm/ 8'2" - 11'5" |



| Model | A                            |
|-------|------------------------------|
| 300   | 6000 - 7000mm/ 19'8" - 23'   |
| 500   | 8000 - 9000mm/ 26'3" - 29'6" |

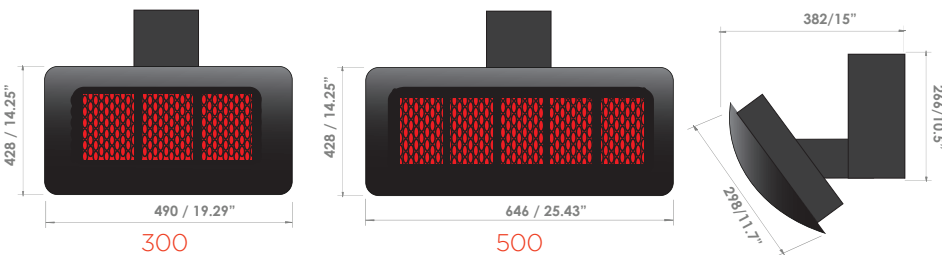
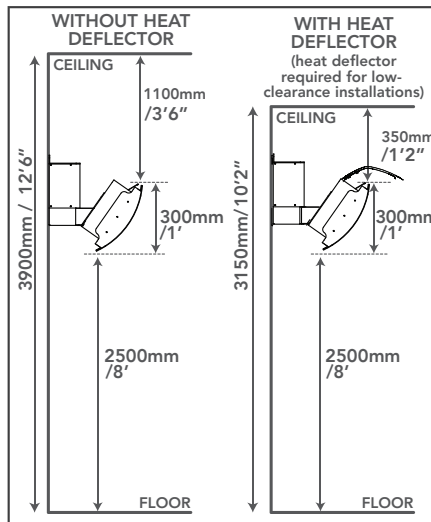
## MINIMUM INSTALLATION CLEARANCES

### WALL MOUNTING



## MINIMUM INSTALLATION CLEARANCES

### CEILING MOUNTING

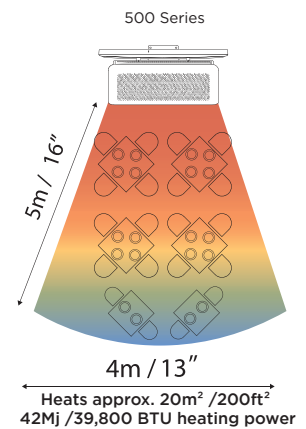
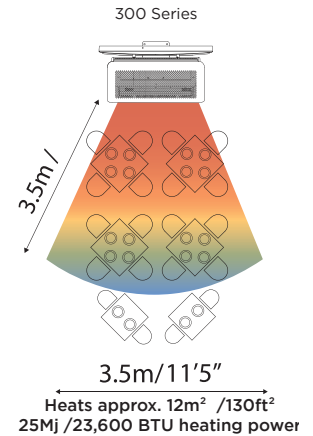


## SPECIFICATIONS

|   | 300 Series  | 500 Series  |
|---|---|---|
| Ceiling Pole  | 5 pole lengths to suit ceiling heights of 3.2, 3.4, 3.6, 3.8 and 4m (contact Bromic Heating for more information) |   |
| Heat Output (on Propane LPG and NG)                 | 25Mj / 23,600BTU/6.9kW  | 42Mj / 39,800BTU/6.9kW  |
| Approximate area heated (m <sup>2</sup> )           | 12m <sup>2</sup> / 130ft <sup>2</sup>   | 20m <sup>2</sup> / 200ft <sup>2</sup>                           |
| Gas connection                                      | 3/8" SAE / 1/2" NPT Female  | 3/8" SAE / 1/2" NPT Female                                      |
| Electrical connection                               | 240 Volt, 3-pin insulated plug / 110 Volt, 3-pin insulated plug   | 240 Volt, 3-pin insulated plug / 110 Volt, 3-pin insulated plug |
| Dimension (WxDxHmm)                                 | 490 x 464 x 428mm / 19.29" x 14.09" x 14.25"  | 646 x 464 x 428mm / 25.43" x 14.09" x 14.25"                    |
| Min. distance to combustible materials <sup>2</sup> | Side: 1100mm / 3.6'   |   |
| (without heat deflector) <sup>2</sup>               | Above (to ceiling): 1100mm / 3.6'   |   |
| (with heat deflector) <sup>2</sup>                  | Above (to ceiling): 350mm / 1'2"  |   |
| Mounting height requirement to ground <sup>3</sup>  | Wall Mount: 2000mm, Ceiling Pole Mount: 2500mm  |   |
| Weight (kg)   | 14kg/33lb   | 18kg/40lb   |

<sup>1</sup>Must only be installed by a licensed technician. Must complete "Pre-Installation Checklist" before installing. <sup>2</sup>The temperature will not exceed 65°C above the ambient temperature at specified distances. Please consult material manufacturer for temperature ratings and suitability. Bromic Heating takes no responsibility for material compliance. <sup>3</sup>Installation must be performed in accordance with AS5601 installation code (or relevant standard) and must comply with any additional jurisdictional requirements. Bromic takes no responsibility for incorrect or non-compliant installations.

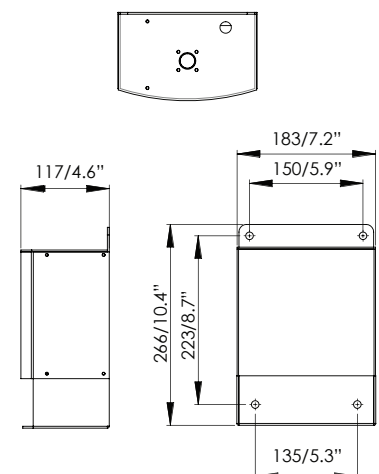
## HEATING AREAS



\*Heat area dependent on ambient temperature and wind.

Optimum conditions experienced at approx 15.5°C / 60°F & low wind

## WALL BRACKET DIMENSIONS



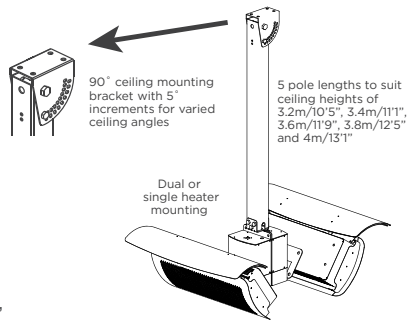
\*See Page 7 For Accessories

**CEILING POLE**

The ceiling mount pole allows; Dual or single heater mounting

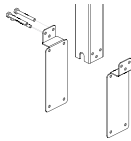
Adjustable mounting bracket to suit most installations

5 lengths to suit ceiling heights of 3.2m/10'5", 3.4m/11'1", 3.6m/11'9", 3.8m/12'5" and 4m/13'1"

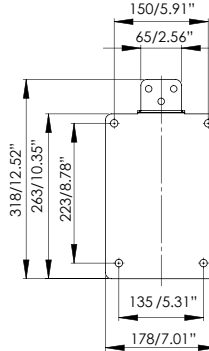


**Ceiling Pole Paddles:**

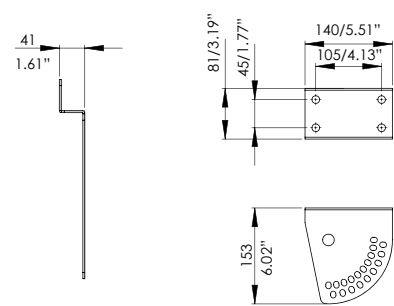
Ceiling Pole Paddles must be placed with flat fascic facing each other as per diagram.



**CEILING POLE PADDLES**

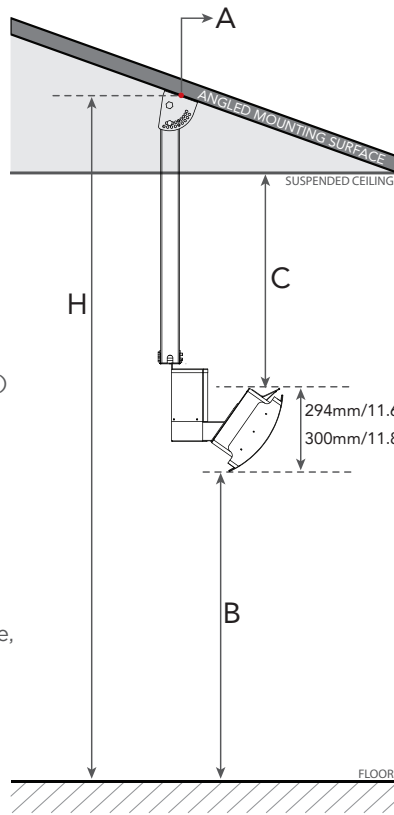


**CEILING POLE MOUNTING BRACKET**



**INSTALLATION OF CEILING MOUNT POLE\***

Ceiling poles cater for varying ceiling heights and angles. This diagram illustrates one possible scenario where the mounting surface is angled, and a suspended ceiling is present.



Bromic Ceiling Poles are made in 5 set lengths based on the height from the ground to the pole mounting surface (Position A). This distance (dimension H) is noted below with the corresponding Bromic Ceiling Pole part number.

Each Pole is manufactured to allow a clearance below the heater (Dimension B) of 2500mm/8ft in accordance with installation requirements.

**IMPORTANT:**

When Selecting your Bromic Ceiling Pole, Please ensure that:

- Dimension B is no smaller than 2500mm/8ft
- Dimension C is no smaller than 350mm/1'2" (with heat deflector)
- Dimension C is no smaller than 1100mm/3'6" (without heat deflector)

Position A is the mounting surface of the ceiling mount pole.

Please ensure the mounting height (H) has been measured correctly.

(For example, in the case of a suspended ceiling, the mounting surface will be above the ceiling.)

Clearance required to surface above heater:

- WITH Bromic Heat Deflector = 350mm / 1'2"
- WITHOUT Bromic Heat Deflector = 1100mm / 3'6"

Dimension H\* (mm) Heat Deflector Required?

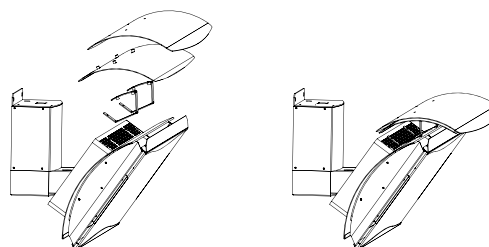
|                |          |
|----------------|----------|
| 3200mm / 11'   | Y        |
| 3400mm / 11'2" | Y        |
| 3600mm / 12'   | Y        |
| 3800mm / 12'5" | Y        |
| 4000mm / 13'1" | Optional |

\*Dimensions provided are nominal only. Slight variations may occur. All dimensions must be checked during installation.

**DUAL-LAYER HEAT DEFLECTOR**

The heat deflector allows for low clearance installations.

Stainless steel dual layer to ensure minimum clearance height from ceiling.



\*Bromic is not responsible for assuring compliance with jurisdictional codes and regulations governing construction, installation and/or use of the heating products and cannot be responsible for how the product is installed or used. Before purchase and use of the product, it is the responsibility of the owner/purchaser to review the product application and all applicable national and local codes and regulations governing the installation and use of such heating products and to seek advice from relevant technical persons.

## COMPLIMENTARY DESIGN SERVICE - PRE- INSTALLATION CHECKLIST

Bromic Heating offers a complimentary design support service to ensure correct heater selection, positioning and quantity.

In order for our technical department to provide a heating proposal we require all information on the checklist below. Please also send digital photos if possible and clearly indicate areas that require heating.

**Bromic requires the following information in order to provide/review a heating proposal:**

|  |   |
|--|---|
| <p>1. A plan/drawing with area dimensions and ceiling heights of all areas that require heating. Please indicate clearly on the plans the outdoor areas that require heating.<br/>A floor plan and an elevation view are essential. Digital photos if possible would be helpful.</p> | <p>8. How exposed is the area to wind?</p>  |
| <p>2. Does the site have existing plumbing for LPG or natural gas?</p>   | <p>9. Is the site is anywhere near the sea?</p>   |
| <p>3. Is the preference to use gas or electric heaters?</p>  | <p>10. Will the heaters be protected (ie shielded from rain) by a ceiling/awning etc?</p>   |
| <p>4. What is the application of each outdoor area - i.e. eating? / smokers terrace? / gaming? /general usage? / standing, tables etc..?</p>   | <p>11. Briefly describe ceiling material type</p>   |
| <p>5. Please provide a seating layout, if a seated area<br/>Please provide a poker machine layout, if the area is an outdoor gaming area.</p>  | <p>12. Are there any wall obstructions? (eg. speakers, tv, camera, lighting etc)</p>  |
| <p>6. How much of the area do you want to heat - all or only part?</p>   | <p>13. Is the preference to mount directly on the wall/ ceiling</p>   |
| <p>7. What type of heating is needed? - that is, do you want to remove the chill from the air for occupants to utilize the area for short periods or create a comfortable environment to ensure people stay out for long periods?</p>  | <p>Once this information has been received, it will be forwarded to the Bromic Technical Department and a heating proposal with available options and a suggested heater layout will be provided.</p> |

---

# PLATINUM

SMART-HEAT™ ELECTRIC

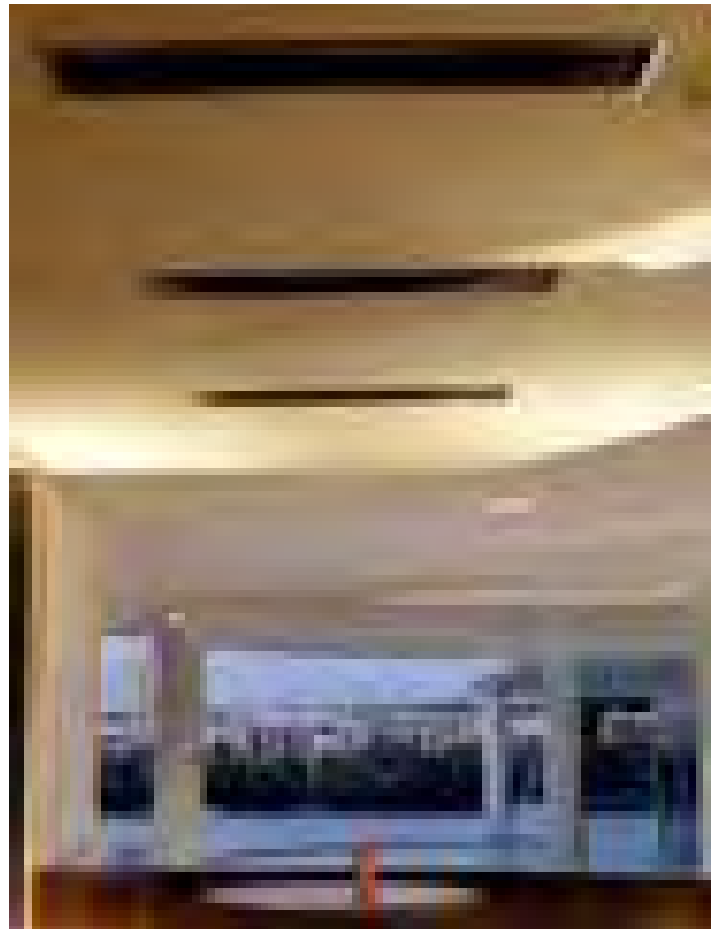
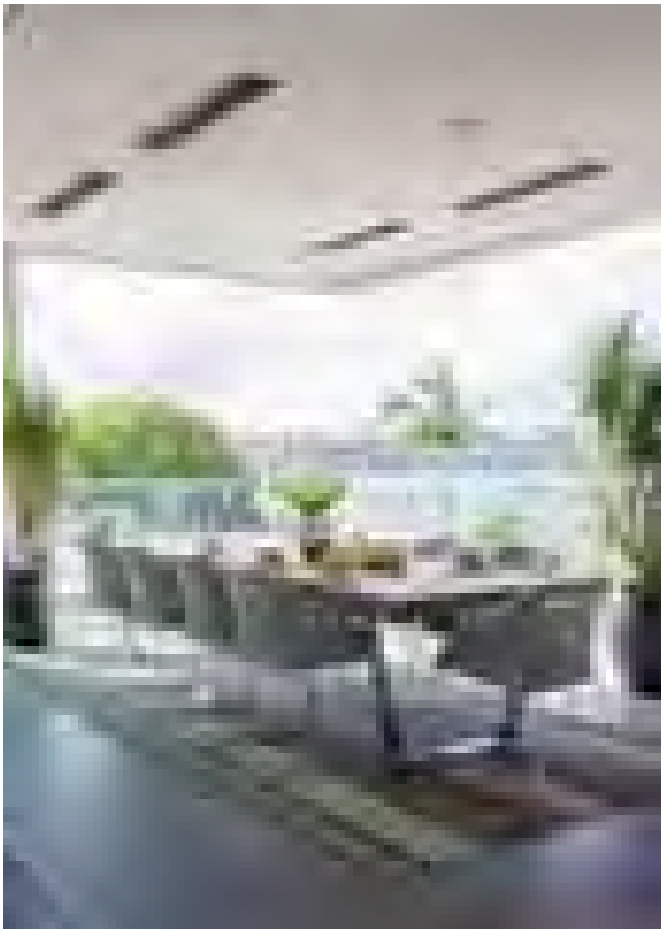
---

Top quality performance and the looks to match



Soft, radiant heat and an ultra-thin design – the Platinum Smart-Heat® Electric complements the atmosphere of any residential or commercial environment.

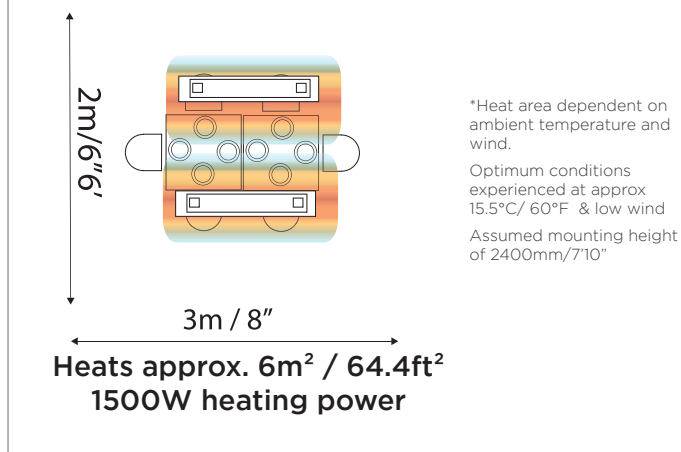
The Platinum Smart-Heat® Electric provides soft, radiant heat. One or more heaters can be switched on and off simultaneously from a single remote-located switch.



## FEATURES

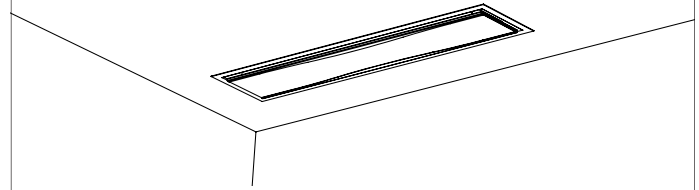
- 1500W/1.5KW Output
- Ultra Thin and Stylish
- Efficient Directional Spot Heating
- Bracket allows for 60 degrees of motion top to bottom
- IPX 5 and wind resistant
- Can be integrated into smart control systems. One or more units can be switched on and off simultaneously from a single remote located switch.
- Multiple Mounting Options - Wall, Ceiling, Pole Suspended and Recessed Mounting

## HEATING AREAS

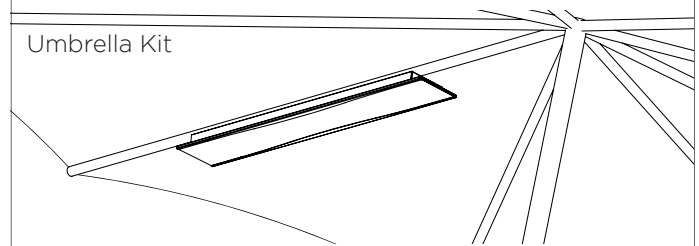


## ACCESSORIES\*

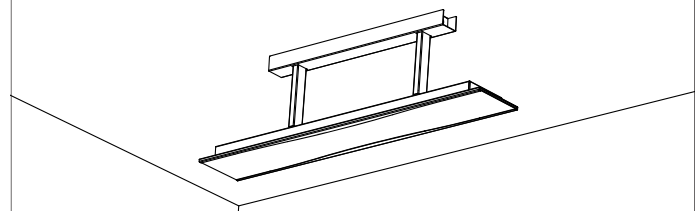
Recessed Mounting



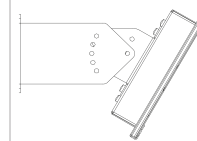
Umbrella Kit



Extension Bracket Suspended



\*All accessories sold separately



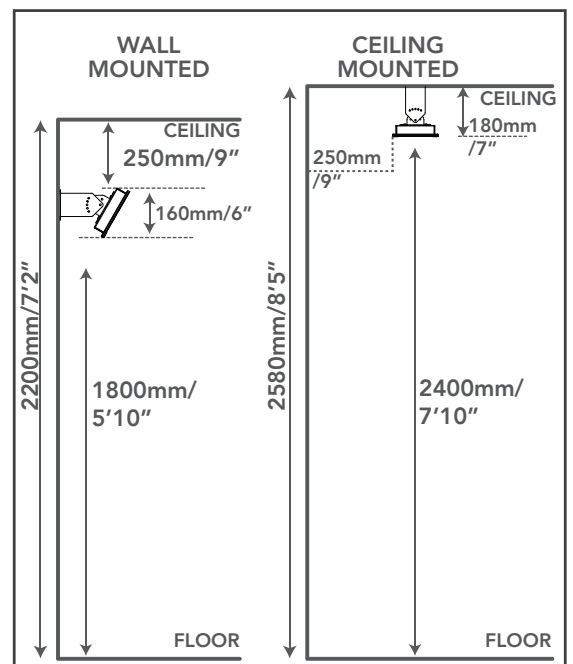
Side Profile: Slim and streamlined with attractive black face

## SPECIFICATIONS

|                                      |   |
|--------------------------------------|---|
| Heat Output (Watts)                  | 1500W                                       |
| Finish                               | Stainless Steel<br>High-temperature Coating |
| Power connection (Volts/Amps)        | 240V / 6.5Amp                               |
| Dimensions excluding bracket WxDxHmm | 960 x 40 x 162mm<br>37.79" x 1.57" x 6.37"  |
| Approx. Weight (kg)                  | 6.2kg / 13.66lb                             |

\*Must only be installed by a licensed technician, Not available in U.S.

## RECOMMENDED INSTALLATION CLEARANCES



# TUNGSTEN

## SMART-HEAT™ ELECTRIC

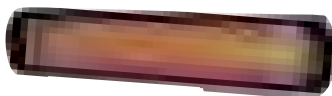
### An infrared electric heater blending aesthetics and function



Tungsten Smart-Heat™ Electric  
2000W (2kW)



Tungsten Smart-Heat™ Electric  
3000W (3kW)



Tungsten Smart-Heat™ Electric  
4000W (4kW)



Tungsten Smart-Heat™ Electric  
6000W (6kW)

The Tungsten Smart-Heat™ Electric is stylishly designed to provide efficient directional heating for commercial and residential locations.

Available in 4 models of varying heating power and compatible with smart control systems to enable precise dimming control. Included are wall and ceiling mounting brackets to allow adjustable angle of the heating direction with simple one-touch on/off switch.

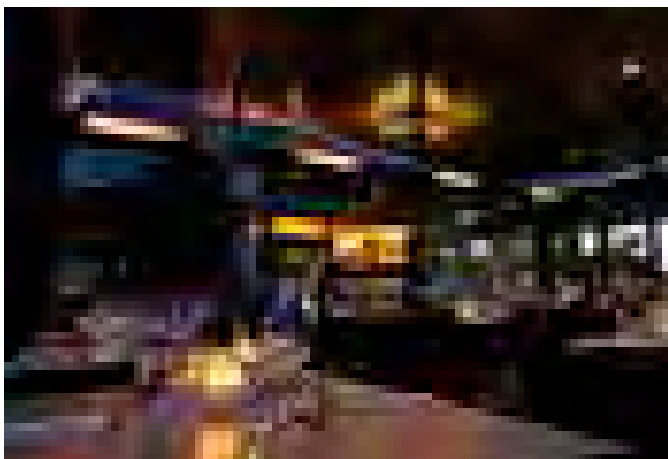
Heaters are equipped with a spectral reflector for excellent radiant heat output.

Standard Colours

Matte Black

Matte White

\*Other colours available on request  
- quantity requirements apply

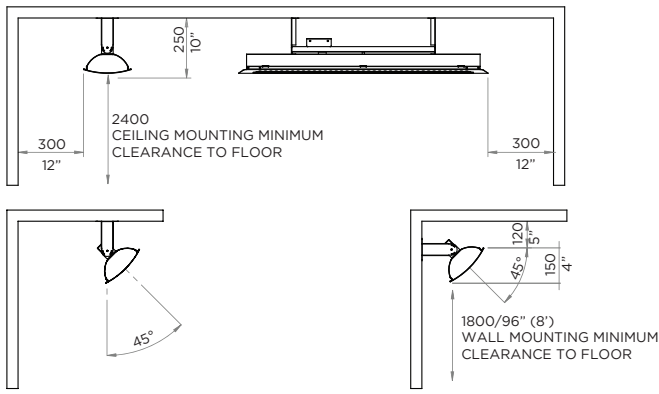


#### FEATURES:

- Elements emit a low intensity glow designed to add a subtle ambience to any outdoor environment.
- High temperature coating with an elongated design to provide a larger and wider heat area.
- Adaptable to a range of applications, with four models of varying heating power - in both black and white.
- Ideal for wall or ceiling mounting.
- Spectral reflector to increase radiant heat output, plus a half power dimmer to save energy when possible.
- Easy to follow instructions for uncomplicated installation using existing infrastructure.

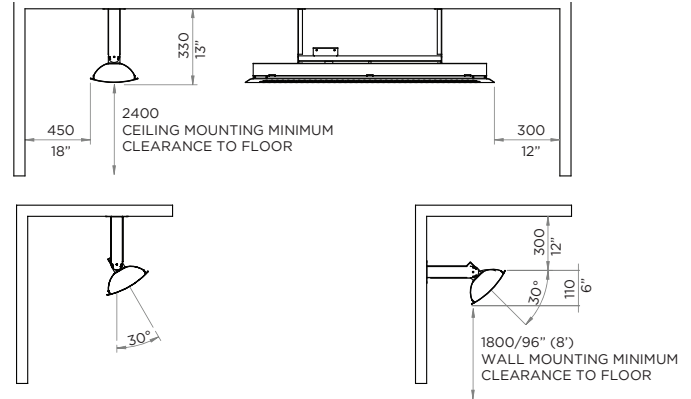
## RECOMMENDED INSTALLATION CLEARANCES FOR 2000W & 3000W MODELS

(All Measurements in mm)



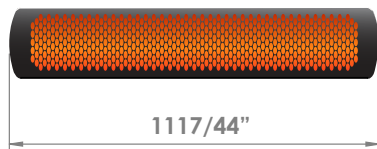
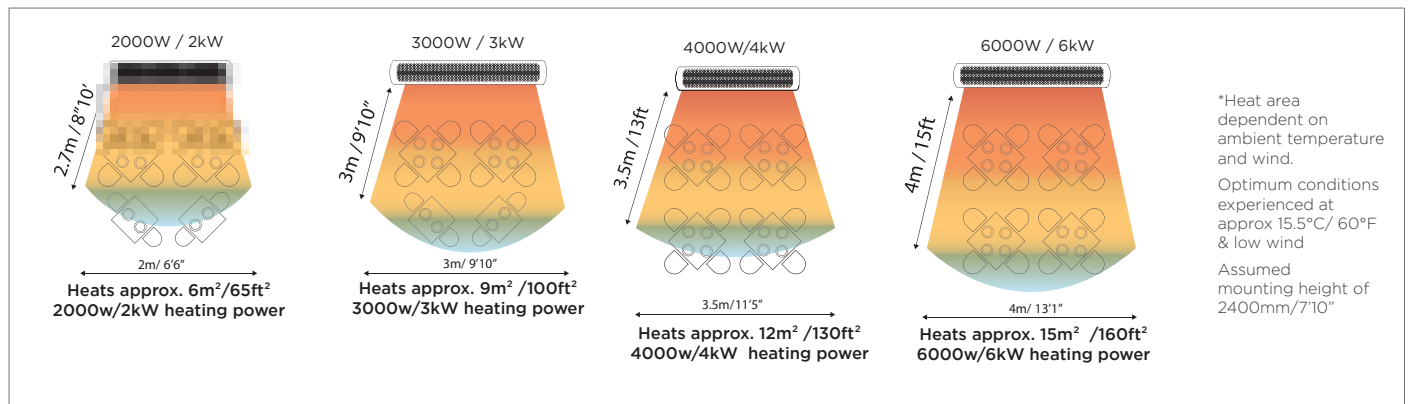
## RECOMMENDED INSTALLATION CLEARANCES FOR 4000W & 6000W MODELS

(All Measurements in mm)

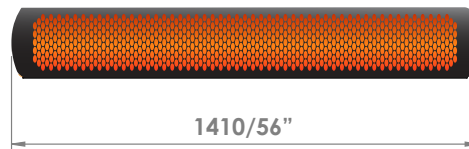


\*Alternatively, short mounting brackets can be used for wall mounting of the 4000w & 6000w models to position the heater closer to the wall. Short mounting brackets must be purchased separately.

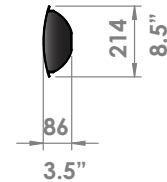
## HEATING AREAS



2000W & 4000W



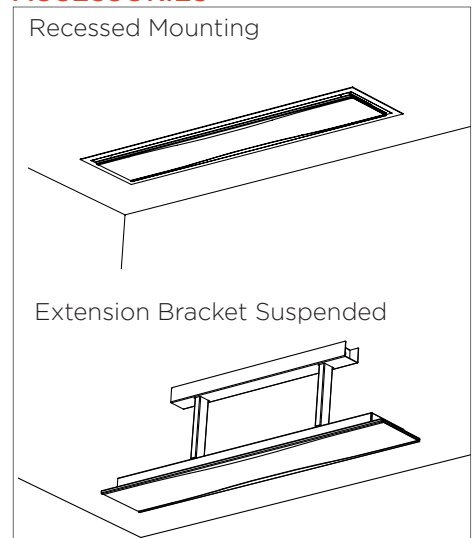
3000W & 6000W



## SPECIFICATIONS

|  | 2000W  | 3000W   | 4000W  | 6000W  |
|--|--|---|--|--|
| No. of Elements  | Single element                                     | Single element                                      | Double element                                       | Double element                                       |
| Bracket Length   | 164mm / 6.5"                                       | 164mm / 6.5"  | 244mm / 9.5"   | 244mm / 9.5"   |
| Power (Watts)  | 2000W  | 3000W   | 4000W  | 6000W  |
| Approximate area heated (m <sup>2</sup> )<br>(Mounting height of 2400mm/7'10") | up to 6m <sup>2</sup> /<br>up to 65ft <sup>2</sup> | up to 9m <sup>2</sup> /<br>up to 100ft <sup>2</sup> | up to 12m <sup>2</sup> /<br>up to 130ft <sup>2</sup> | up to 15m <sup>2</sup> /<br>up to 160ft <sup>2</sup> |
| Power connection required<br>(Volts/Amps)                                      | 230 V / 8.3 A/<br>220 V / 9 A                      | 230 V / 12.5 A/<br>220 V / 13.6 A                   | 230 V / 16.6 A/<br>220 V / 18.1 A                    | 230 V / 25 A/<br>220 V / 27.2 A                      |
| Dimension (WxDxHmm)  | 1117 x 214 x 86mm/<br>44" x 8.5" x 3.5"            | 1410 x 214 x 86mm/<br>56" x 8.5" x 3.5"             | 1117 x 214 x 86mm/<br>44" x 8.5" x 3.5"              | 1410 x 214 x 86mm/<br>56" x 8.5" x 3.5"              |

## ACCESSORIES



\*Must only be installed and serviced by a licensed and authorised technician.

Product manual must be read before installing or servicing this product.

International patent pending and design registered by BROMIC HEATING Pty Ltd, a member of the Bromic Group of companies.



---

# TUNGSTEN

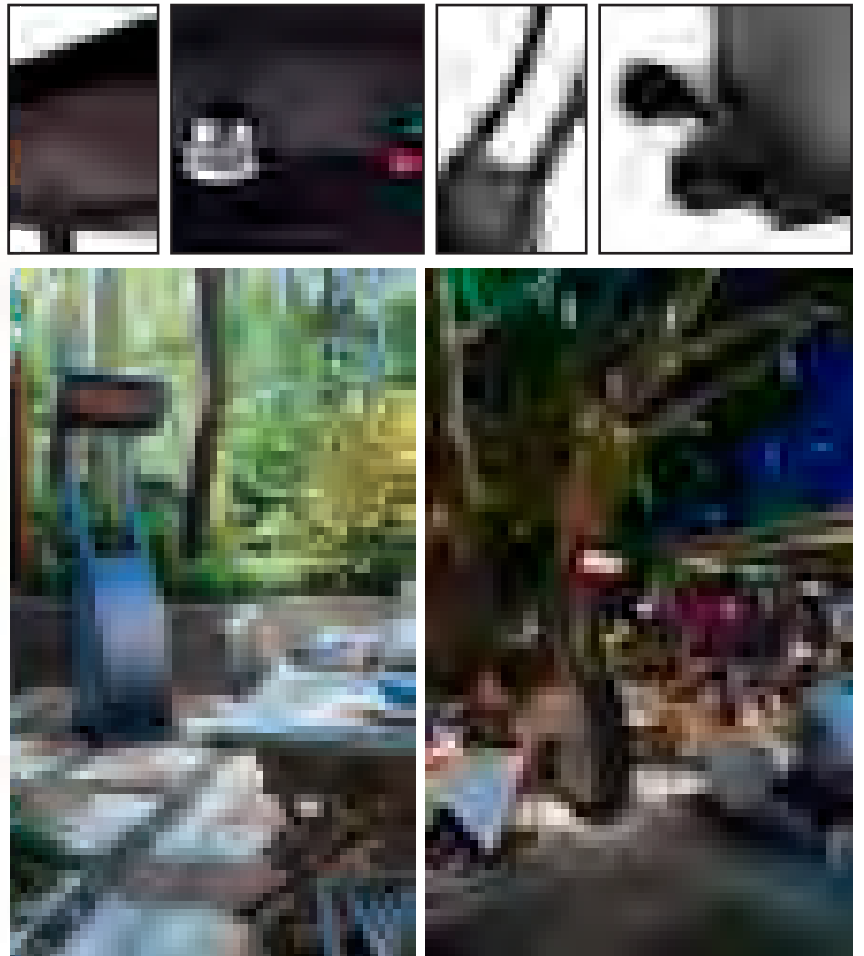
SMART-HEAT™ PORTABLE

---

## A new era in portable gas heating

The Tungsten Smart-Heat™ Portable Gas Radiant Heater is the synthesis of cutting edge design, world-first engineering, and practical functionality.

Consistent with Bromic Heating's vision for industry innovation, the Tungsten Smart-Heat™ Portable takes relocatable gas heating to the next level with its efficiency and effectiveness unparalleled in today's market.

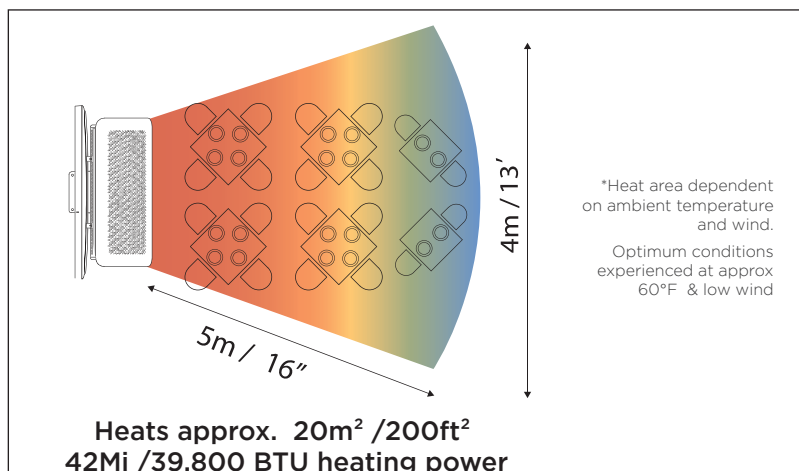


## FEATURES

- **Heat Output:** With coverage of up to 20m<sup>2</sup>/200ft<sup>2</sup>, the Tungsten Smart-Heat™ Portable delivers a widespread heat field of up to 3.6m/12ft wide and 4.5m/15ft deep.
- **Versatility:** Unique and patented adjustable heat control ensures comfortable heat.
- **Efficiency:** High intensity ceramic burner, delivering optimal heat with minimal heat loss.
- **Wind Resistance:** Specifically built to provide constant and consistent heat in any environment at wind speeds up to 12km/h (7.5mph).
- **Directional Heat:** Innovative adjustable tilting head ensures warmth goes exactly where it is needed.
- **Modular Design:** Functional and pragmatic, the Tungsten Smart-Heat™ Portable can easily be assembled, dismantled and stored.
- **Maneuverability:** Anti-tilt structure with built-in wheels for easy movement.
- **Soft Touch Ignite:** Battery activated repetitive spark ignition.

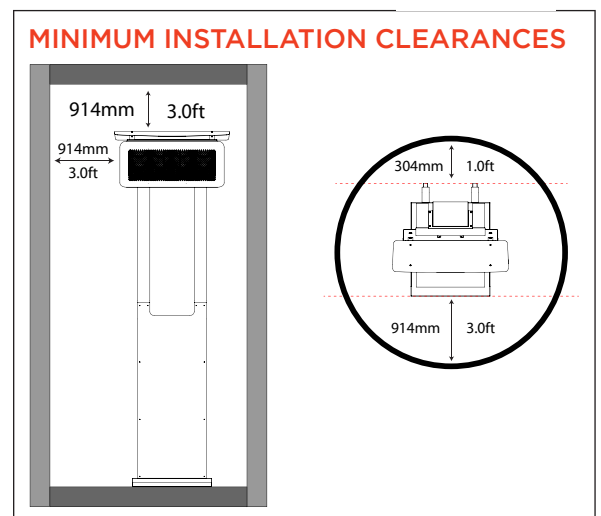


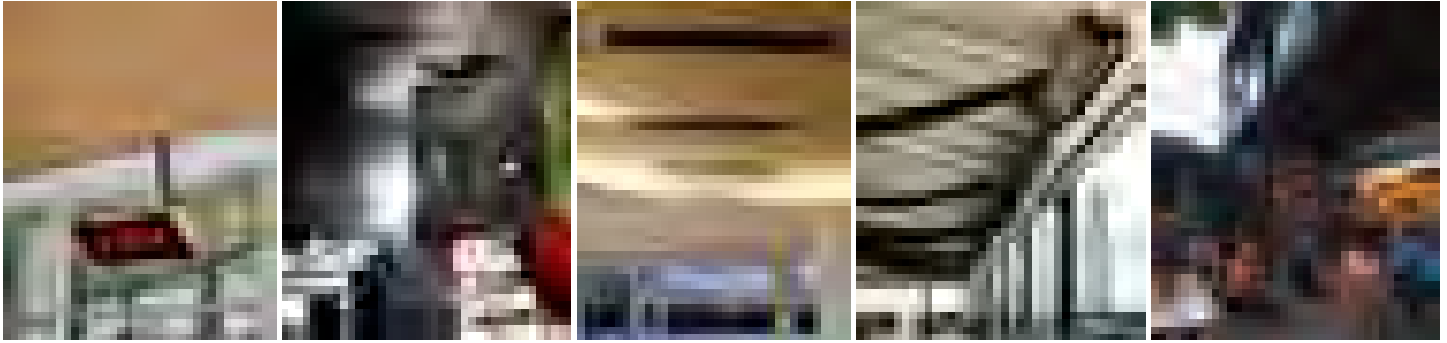
## HEATING AREAS



## SPECIFICATIONS

|                             |   |
|-----------------------------|---|
| Ignition                    | 1.5V repetitive spark ignitor             |
| Adjustable Heat Output      | 34 Mj - 40.6 Mj / 21,300 BTU - 38,500 BTU |
| Gas Type                    | LPG/Propane                               |
| Gas Supply                  | Gas Cylinder not included                 |
| Weight (excluding cylinder) | 56 Kg / 123.5 lbs                         |
| Safety features             | Flame Failure & Anti-Tilt Safety Device   |
| Gas supply pressure         | 2.75 kPa / 11"wc                          |





## MAINTENANCE AND CARE:

### GAS

The heaters are constructed using stainless steel and high temperature coated paint to ensure maximum life in the outdoor environment. To maximize the life of the heater it is important that frequent cleaning is performed and appropriate care is taken.

#### Bromic recommends the following:

Where heaters are not positioned under full cover, always install with the corresponding Bromic heat shield and clean according to Bromic instructions. Clean the heater weekly during regular use and at least monthly when not in use. In a salt-air environment, such as near the ocean, cleaning is recommended more frequently. Heaters must not be cleaned with cleaners that are combustible or corrosive.

To clean effectively, Bromic recommends the following:

- Rinse and clean all exposed stainless steel surfaces with fresh water and dry thoroughly with a clean soft cloth.
- **PLATINUM GAS ONLY** : Apply 3M™ stainless steel cleaner and polish to protect the stainless steel from corrosion (NOTE: Cleaner should not be applied on any internal heater components or any other parts which come into direct contact with flame).
- Remove the heater from the bracket in the summer months and store away in a dry protected area (NOTE: removal of the heater requires disconnection of electrical and gas supply. ONLY authorized technicians are permitted to carry out this task.)
- Do not apply any additional surface coating to the heaters under any circumstances. Use of additional coating other than those applied during manufacture could result in hazardous reactions such as toxic fumes or fires. Additional coatings will void the warranty.

### ELECTRIC HEATERS

- Ensure there is no excessive build-up of dirt/dust on the reflector surfaces of the heater.
- Ensure heater is not on, cool to touch and wipe off any dirt/dust with a soft & dry cloth

## SERVICING

Bromic outdoor radiant heaters require regular servicing to maintain efficient operation. The heaters are used on a cyclical basis however are exposed to the external elements continuously (both during periods of use and whilst remaining idle). Regular servicing is therefore required to ensure trouble free operation. All maintenance should be carried out ONLY by authorised service personnel. Servicing is recommended at the commencement of each winter season and more frequently in adverse conditions.

Please refer to the installation manual for the standard Bromic servicing instructions.

## WARRANTY

|                           |                          |
|---------------------------|--------------------------|
| Tungsten Portable heaters | 12 months back to base   |
| Platinum gas heaters      | 12 months parts & labour |
| Tungsten gas heaters      | 12 months parts & labour |
| Platinum electric heaters | 12 months replacement    |
| Tungsten electric heaters | 12 months replacement    |

For full warranty conditions, please refer to the back page for the installation instruction and service manual for each heater or contact our customer service team.



---

#### **USA**

9th Floor, 8105 Irvine Center Drive  
Irvine, CA 92618 United States  
Tel : 1 800 301 1293  
W: [www.bromicheating.com](http://www.bromicheating.com)  
E: [info@bromicheating.com](mailto:info@bromicheating.com)

#### **EUROPE**

**Warehouse**  
Abel Tasmanstraat 11, 3165 AM  
Rotterdam, Netherlands  
Tel : +61 2 9748 3900  
Fax : +61 2 9748 4289  
W: [www.bromicheating.com](http://www.bromicheating.com)  
E: [info@bromicheating.com](mailto:info@bromicheating.com)

#### **AUSTRALIA (HEAD OFFICE) & NZ**

1 Suttor Street, Silverwater  
Sydney, NSW 2128 Australia  
Tel : 1300 731 280 (Australia)  
Tel : 0508 276 642 (NZ)  
+61 2 9748 3900 (Int'l)  
Fax : +61 2 9748 4289  
W: [www.bromicheating.com.au](http://www.bromicheating.com.au)  
E: [info@bromicheating.com.au](mailto:info@bromicheating.com.au)